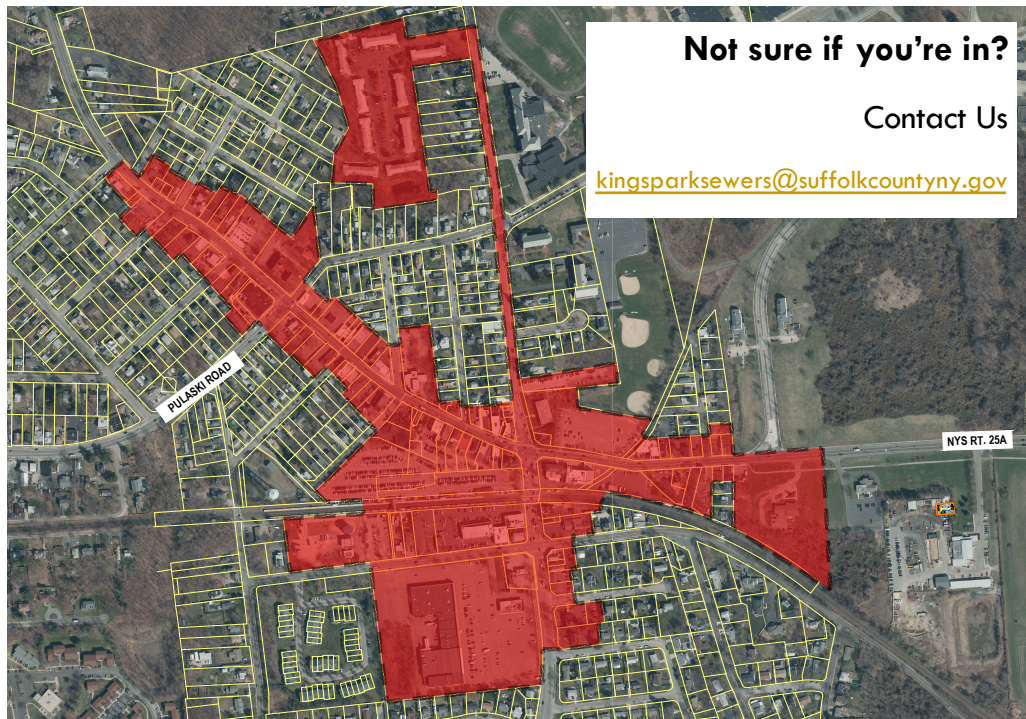


KINGS PARK SEWERS – HOW DO I CONNECT?



Schedule



WHAT DO SEWERS MEAN FOR ME?

Benefits

- Increased flexibility for uses (e.g., buildings limited to dry retail or office could be used for restaurants, coffee shops, other wet uses, etc.)
- Eliminate responsibility and cost of maintaining onsite septic systems/cesspools
- Increase property value

Private costs and investment

- Ad valorem charge – projected average ~\$255/year beginning in 2023
- User fee – projected average ~\$350/year when property connects to sewer main in 2026
- Connection and septic system abandonment costs – projected average ~\$8,500 per building



Public investments

- \$20M from NYS Transformative Investment Program (TIP) to extend sewer mains and infrastructure throughout the district
- \$500,000 from Suffolk County JumpStart program for Pulaski Road Municipal Parking lot
- \$250,000 Façade improvement program (for all downtowns in TOS)
- \$200,000 from Suffolk County to complete Kings Park Downtown Revitalization Master Plan
- \$150,000 from NYS and SC to design streetscape improvements

visit www.kpdowntown.com for project updates